

angels & urchins

2019/2020

SCHOOLS GUIDE

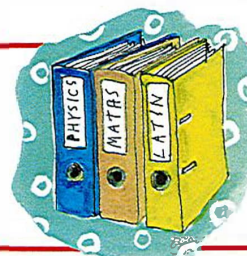


THE ESSENTIAL DIRECTORY: over 400 comprehensive listings

Primary & Prep
London day &
boarding schools by
geographical area



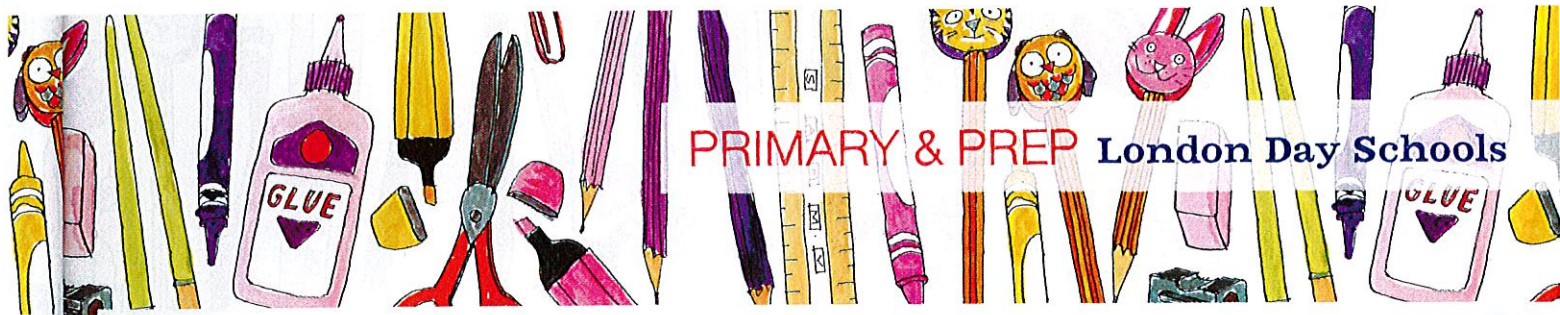
Secondary
Top secondary
choices in London
& boarding



Extra Help
SEN schools &
centres, tutors,
events



in association with THE GOOD SCHOOLS GUIDE



PRIMARY & PREP London Day Schools

CENTRAL LONDON Belgravia, Chelsea, Knightsbridge, Marylebone, South Kensington

Boys
Ages: 4-11 (2019/20 will be ages 4-9 as the oldest class is Y4)
150 pupils, 22 pupils/class (2019/20: 110 pupils)
Admissions Procedure Register as soon as possible after birth. £75 registration fee. Assessment in Autumn term for entry into Reception. £2,850 deposit secures a place in Reception.
Fees £6,920
Headteacher Mrs Eleanor Dixon
Principal Mrs Anita Griggs
Admissions Contact Mrs Marina Wood

● **FALKNER HOUSE SCHOOL (BRECHIN PLACE, GIRLS)**

19 Brechin Place, SW7 4QB
☎ 020 7373 4501
✉ falknerhouse.co.uk
office@falknerhouse.co.uk
Girls (co-ed in Nursery)
Ages: 3-4 (Nursery), 4-11
199 pupils, 22 pupils/class
Admissions Procedure Register as soon as possible after birth. £75 registration fee. Nursery places are allocated on first-come, first-served basis. Assessment in Spring term for entry into Reception. £2,850

deposit secures a place in Reception. £2,000 for Nursery offer.
Children go on to St Paul's Girls, Latymer Upper, Godolphin & Latymer, Wycombe Abbey, Cheltenham Ladies' College.
Fees £3,260 (Nursery); £6,360 (School)
Headteacher Mrs Flavia Rogers
Principal Mrs Anita Griggs
Admissions Contact Miss R Boyd

● **FRANCIS HOLLAND SCHOOL SLOANE SQUARE**

39 Graham Terrace, SW1W 8JF
☎ 020 7730 2971
✉ fhs-sw1.org.uk
Girls
Ages: 4-11 (to 18 in Senior School)
168 pupils in Junior School
24 pupils/class
Admissions Procedure Register by 31 Jul preceding the year of entry. Formal assessment at 4yrs.
Children go on to Senior School (approx a third), St Paul's Girls, Godolphin & Latymer and various boarding schools.
Fees £6,500-£7,200
Headmistress Mrs Lucy Elphinstone
Head of Junior Mrs Suzy Dixon

Admissions Contact
Mrs Fiona Holland

● **GARDEN HOUSE SCHOOL**

Turks Row, SW3 4TW
☎ 020 7730 1652
✉ gardenhouseschool.co.uk
Co-ed. Girls and boys taught separately but participate in some activities together.
Ages: 3-11
500 pupils, 16 pupils/class (max)
Admissions Procedure Register within a year of birth. Application fee £120.
Kindergarten and Boys (4+): Entry by formal assessment in Oct preceding Sept entry. Girls (4+) and Boys (8+): Entry by formal assessment in Jan preceding Sept entry. £2,000 deposit secures place.
Girls go on to Francis Holland, Godolphin & Latymer, St Paul's, Wycombe Abbey, St Mary's Ascot, Downe House.
Boys go on to St Paul's Juniors, Westminster Under, Westminster Cathedral Choir School, Ludgrove, Summer Fields.
Fees £5,900 (Nursery); £7,850 (School)
Sibling reductions
Headteachers Mrs Annie Lee, Mrs Julia Adlard, Mr Christian Warland
Admissions Contact Mrs Sophie Strafford

● **GLENDOWER PREPARATORY SCHOOL**

86/87 Queen's Gate, SW7 5JX
☎ 020 7370 1927
✉ glendowerprep.org
Girls
Ages: 4-11
250 pupils, 18 pupils/class
Admissions Procedure Register. Meet Headteacher for tour of the school. £110 registration fee. Children assessed the January before entry. A deposit of half a term's fees secures a place.
Girls go on to St Paul's, Godolphin & Latymer, Latymer Upper, North London Collegiate, Francis Holland, Downe House, Wycombe Abbey, Cheltenham Ladies' College, St Mary's Ascot.
Fees £6,700
Headteacher Mrs Nina Kingsmill Moore
Admissions Contact Registrar

● **THE HAMPSHIRE SCHOOL, CHELSEA**

Early Years: 5 Wetherby Place, SW7 4NX
☎ 020 7370 7081
Pre Prep & Prep: 15 Manresa Road, SW3 6NB
☎ 020 7352 7077
✉ thehampshireschoolchelsea.co.uk

Queen's Gate | INDEPENDENT DAY SCHOOL FOR GIRLS AGED 4 TO 18 IN SOUTH KENSINGTON

Queen's Gate offers girls a warm, supportive environment where individuality is nurtured, academic standards are high and a broad-based curriculum ensures a well-rounded education.

Junior School At-home Receptions
AUTUMN 2019 Tuesday 17 September · Friday 27 September · Thursday 3 October · Tuesday 12 November · Wednesday 20 November
Our At-home Receptions begin at 9.15 am

To book, please visit www.queensgate.org.uk/jsopenevents

Queen's Gate Junior School, 125-126 Queen's Gate, London SW7 5LJ
registrar@queensgate.org.uk · 020 7594 4982

FRANCIS HOLLAND SCHOOL SLOANE SQUARE

LEADING INDEPENDENT SCHOOL FOR GIRLS AGED 4-18

OPEN EVENTS 2019

Junior School
23rd September
4th November

Senior Open Evening
10th October 6 - 8pm
(no booking required)

Senior Open Mornings
12th, 24th September
8th, 15th November

Sixth Form Open Evening
25th September 6pm

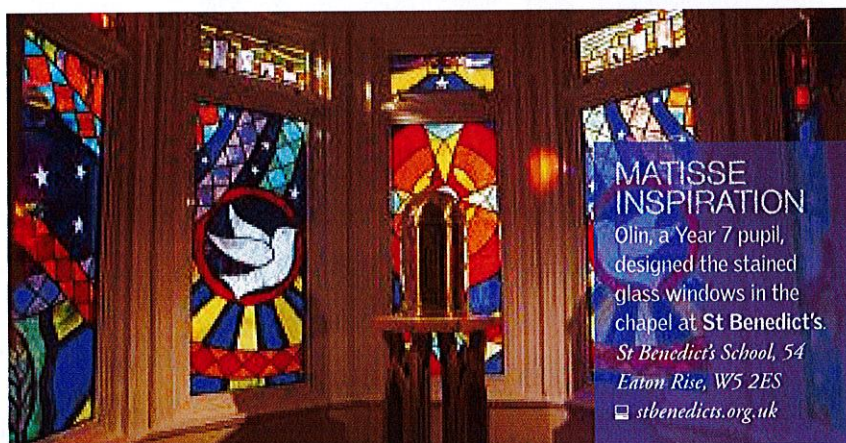
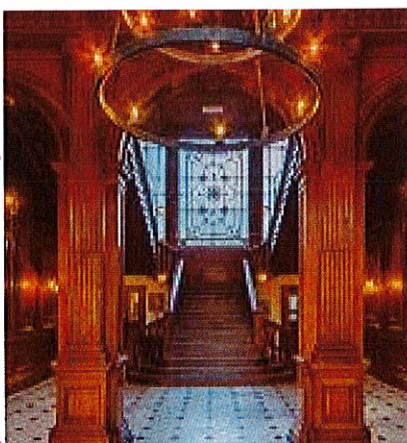
To reserve a place please contact the Registrar, Mrs Fiona Holland

registrar@fhs-sw1.org.uk
020 7730 2971
www.fhs-sw1.org.uk
Reg. Charity No 312745

FILM STAR

Used in a scene from *The Avengers – Age of Ultron*, a light had to be craned over the top of *Tring Park Mansion* in order to shine through the window for a shot that featured *Scarlett Johansson* on the stairs.

Tring Park School for Performing Arts, Mansion Drive, Tring, HP23 5LX tringpark.com



MATISSE INSPIRATION

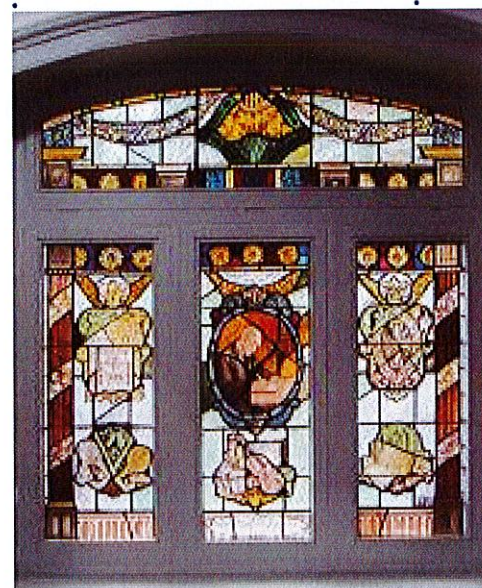
Olin, a Year 7 pupil, designed the stained glass windows in the chapel at *St Benedict's*.
St Benedict's School, 54 Eaton Rise, W5 2ES
stbenedicts.org.uk

CENTENARY CELEBRATION

The Centenary Window at *Francis Holland* was designed and made by *Edward Payne* and unveiled by the Chairman of the Governors in 1981.

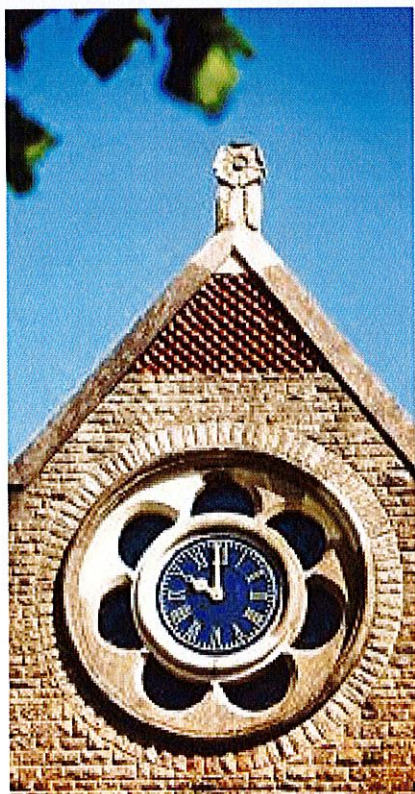
Francis Holland Sloane Square, 39 Graham Terrace, SW1W 8JF

fhs-sw1.org.uk



Windows

From stunning stained glass to remarkable views, Anya Waddington discovers hidden gems in our senior schools.

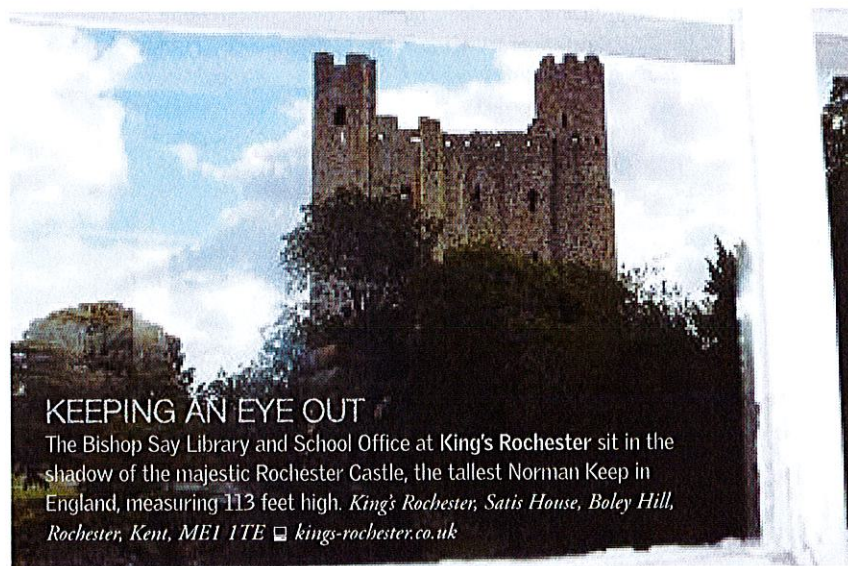


◀ LOOK BACK IN TIME

The very unusual window around the school clock at *Stamford School* was installed when *School House* was built in 1884.

Stamford School, Southfields House, St Paul's Street, Stamford, Lincolnshire PE9 2BQ

ses.lincs.sch.uk



KEEPING AN EYE OUT

The *Bishop Say Library and School Office* at *King's Rochester* sit in the shadow of the majestic *Rochester Castle*, the tallest Norman Keep in England, measuring 113 feet high. *King's Rochester, Satis House, Boley Hill, Rochester, Kent, ME1 1TE* kings-rochester.co.uk