

SCHOOL NEWS

FIRST ELEVEN MAGAZINE's round-up of news from the independent schools sector

Art works for charity

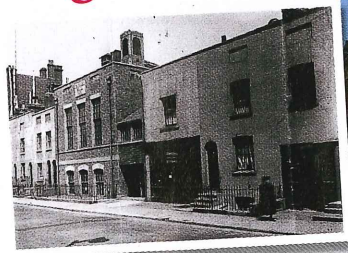
Art work by girls at **SHERBORNE GIRLS SCHOOL** is being exhibited and sold in London in aid of the London-based charity Kids Company, founded by Old Girl Camila Batmanghelidjh. The charity was set up to help exceptionally vulnerable and traumatised children, who often hide their abuse in order to survive. Every year over 550,000 cases of child abuse and neglect are reported to an overstretched social services and Kids Company was founded to support the 90% they cannot help – with a mission to give them a safer childhood and positive future, and to help them break the cycle of abuse and feelings of despair.

The exhibition will be held at Arthur Ackermann, the contemporary art dealer in Knightsbridge and will show paintings, 3D works, textiles, photographs and mixed media from both current and former students. Camila Batmanghelidjh, founder of Kids Company, will officially open the exhibition on Friday 4 March and it runs until 12 March. www.sherborne.com



Schools expanding

Knightsbridge School has been undergoing a significant programme of development. Occupying two houses in central London, it opened in September 2006 with just 79 pupils but now has 310 pupils aged 3-13, with waiting lists for entry to Reception, and full classes in all year groups. Facilities have expanded to include a science lab, two ICT suites, an in-house catered dining hall, performing



arts studio, music practice rooms, library and an art studio. **Francis Holland School** in Sloane Square invited the



Duke of Westminster to open Carmel Hall, its new specialist performing arts centre providing the 450-strong girls' school with cutting-edge music and drama facilities and a stunning double-height performance space.

Knightsbridge School with a new look!

Eltham College recently acquired the management of the London Marathon Fields, extending the total expanse of ground available to the school to 60 acres. Extra facilities include four football pitches and a rugby pitch in the winter and two cricket pitches in the summer, as well as a floodlit all-weather mini games area which can be used for 5-a-side soccer, tennis or netball.