

RIBA Announces 2021 National Award Winners Highlighting UK's Best New Buildings



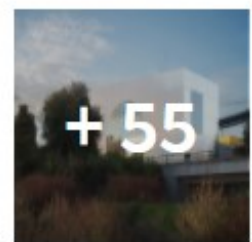
 Save this article



Written by [Andreea Cutieru](#)

a day ago

The [Royal Institute of British Architects](#) has announced the 54 winners of the [2021 RIBA National Awards](#), highlighting the UK's best new architecture. Ranging from single homes and housing schemes to educational facilities, cultural buildings, sports venues and medical centres, this year's projects illustrate a growing preoccupation with restoration and adaptive reuse, as well as a significant investment in education and culture. Inaugurated in 1966, the awards provide insight into UK's architectural environment and the economic trends shaping the AEC industry.



"Ranging from radical, cutting-edge new designs to clever, creative restorations that breathe new life into historic buildings, these projects illustrate the enduring importance and impact of British architecture", says [RIBA](#) President Simon Allford. The 2021 [RIBA](#) National Awards aim to showcase a high standard in architecture across scales, programs and budgets. The winners will now be considered for the [RIBA](#) Stirling Prize, whose shortlist will be announced on September 16th.

“ Long life, loose fit, low energy architecture is the present and the future. It is therefore very encouraging to see restoration and sensitive adaptation feature so prominently this year, with many buildings acknowledging their history, the needs of the present and the potential of their dynamic future. Arts and culture enrich our lives, so after 18 months of restrictions and isolation, the array of quality new museums, galleries and performance spaces is great to see and visit! The 2021 [RIBA](#) National Award winners are an intelligent and refreshing collection of exemplary projects. - [RIBA](#) President Simon Allford

”

Related Article

[RIBA Announces 2021 South Award Winners](#)

The winners are as follows:

East

Cambridge Central Mosque / Marks Barfield Architects





Imperial War Museums Paper Store (Duxford) / Architype



Key Worker Housing, Eddington (Cambridge) / Stanton Williams



The Water Tower (Norfolk) / Tonkin Liu



London

95 Peckham Road (London, SE15) / Peter Barber Architects



Blackfriars Circus (London SE1) / Maccreanor Lavington





Caudale Housing Scheme (London, NW1) Mae Architects



Centre Building at LSE (London, WC2A) / Rogers Stirk Harbour & Partners





Centre for Creative Learning, Francis Holland School (London, SW1W) / BDP



English National Ballet at the Mulryan Centre for Dance (London, E14) / Glenn Howells Architects



Floating Church (London, E15) / Denizen Works





ArchDaily

Projects Products

House-within-a-House (London) / alma-nac





Moore Park Mews (London, SW6) / Stephen Taylor Architects





North Street (London IG11) / Peter Barber Architects



Royal Academy of Arts (London W1J) David Chipperfield Architects



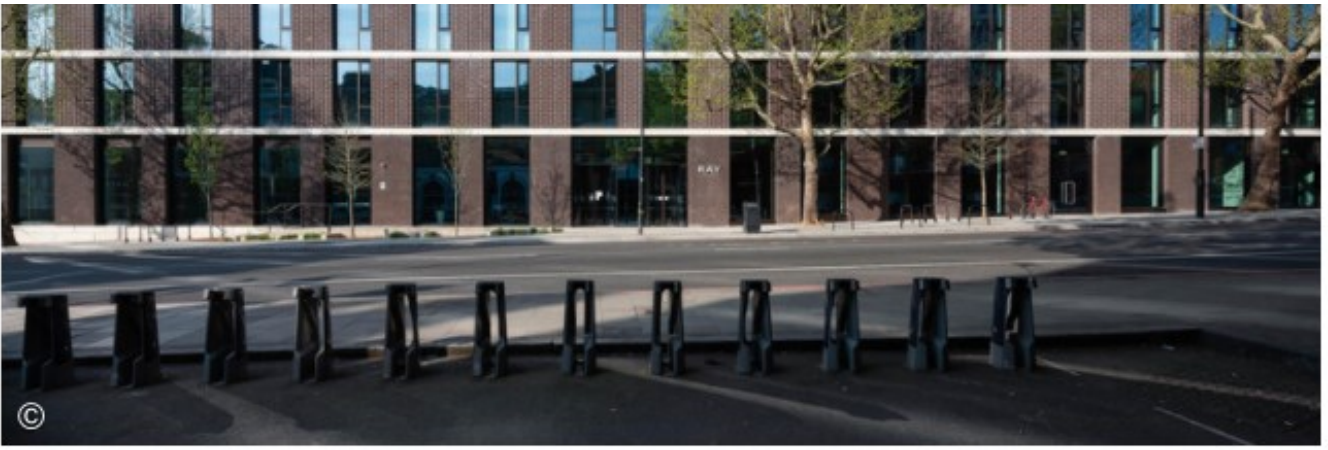


Royal College of Pathologists (London, E1) / Bennetts Associates



The Ray Farrington (London, EC1R) / Allford Hall Monaghan Morris





The Rye Apartments (London SE15) / Tikari Works



The Standard (London WC1H) / Orms





The Student Centre, UCL (London, WC1H) / Nicholas Hare Architects



Tiger Way (London, E5) / Hawkins\Brown





Tottenham Hotspur Stadium (London, N17) / Populous



Wooden Roof (London, N1) / Tsuruta Architects





Zayed Centre for Research into Rare Disease in Children (London WC1N) / Stanton Williams



North East

Lower Mountjoy Teaching and Learning Centre Durham University / FaulknerBrowns Architects



North West

Pele Tower House (Lake District) / Woollacott Gilmartin Architects



The Gables (Liverpool) / DK-Architects



The Oglesby Centre at Hallé St Peter's (Manchester) / stephenson hamilton risley STUDIO



Windermere Jetty Museum / Carmody Groarke



Scotland

Aberdeen Art Gallery / Hoskins Architects



Bayes Centre, University of Edinburgh / Bennetts Associates





sportscotland National Sports Training Centre Inverclyde (Largs, North Ayrshire) / Reich and Hall Architects



The Egg Shed (Ardrishaig, Lochgilphead) / Oliver Chapman Architects



The Hill House Box (Helensburgh) / Carmody Groarke



South & South East

Brighton College - School of Science and Sport / Office for Metropolitan Architecture



Library and Study Centre St Johns College Oxford University / Wright & Wright Architects



ArchDaily

Projects Products



MK Gallery (Milton Keynes) / 6a architects



Moor's Nook (Woking) / Coffey Architects



The Clore Music Studios New College Oxford University, John McAslan + Partners

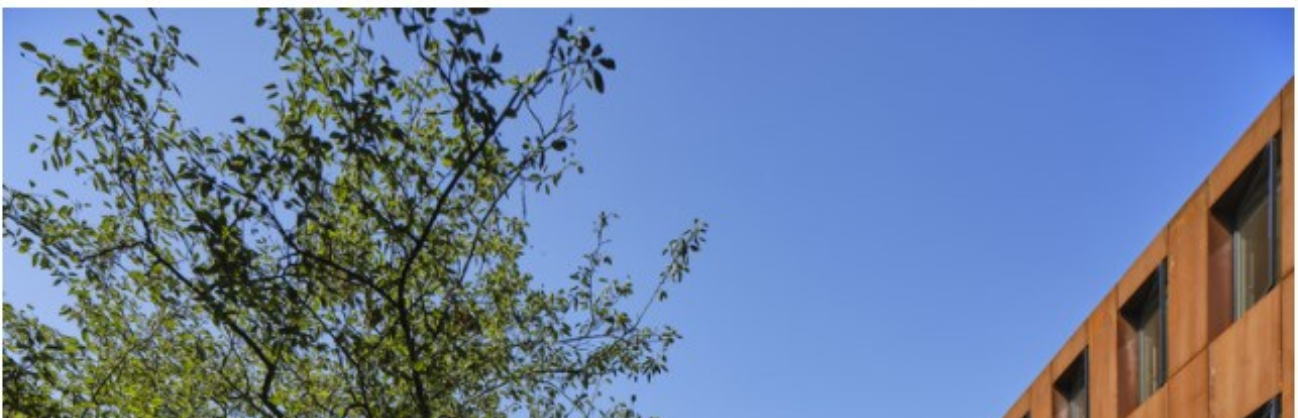




The Dorothy Wadham Building Wadham College Oxford University, Allies and Morrison

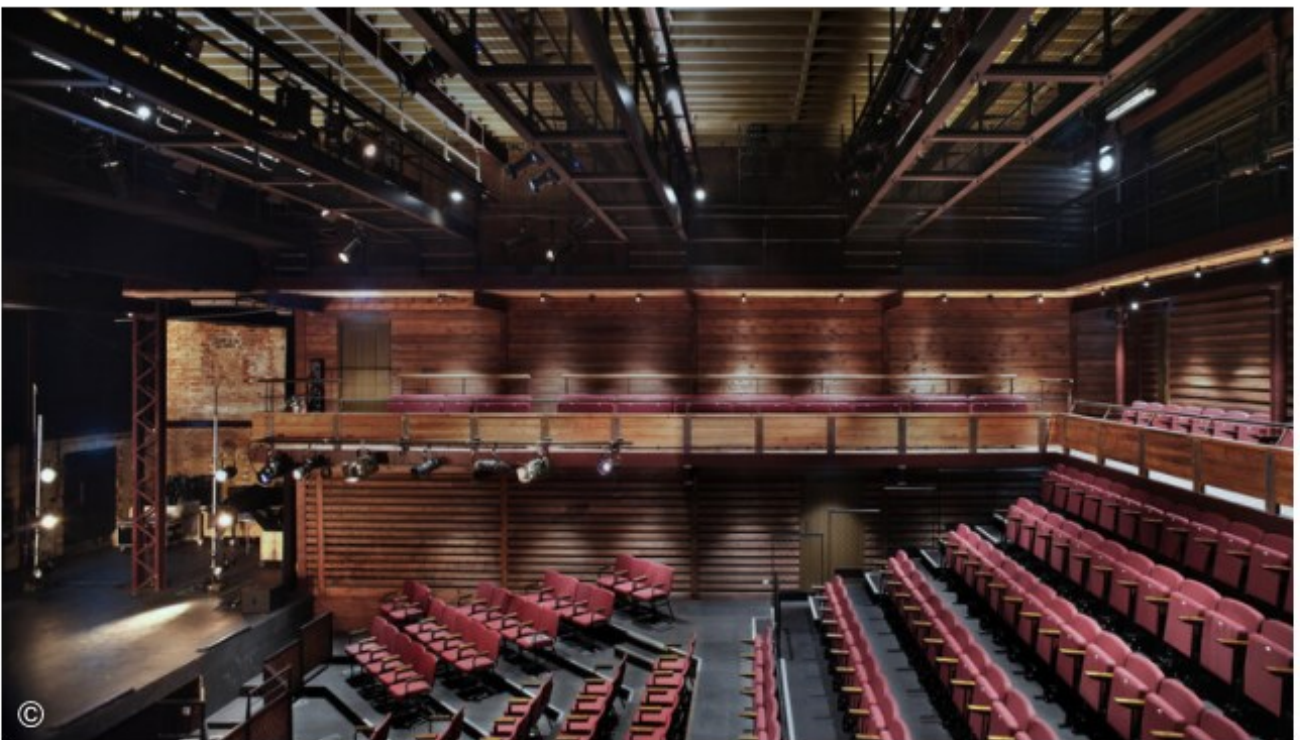


The King's School, Canterbury International College / Walters & Cohen Architects

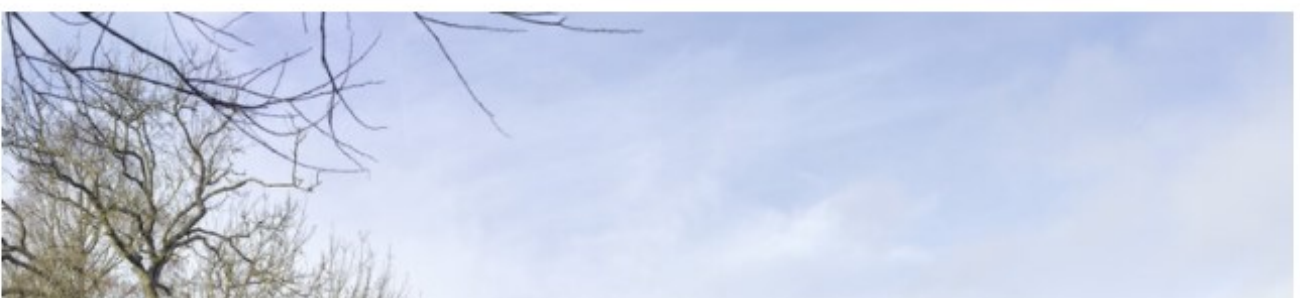




The Malthouse, The King's School Canterbury / Tim Ronalds Architects



The Narula House (Berkshire) / John Pardey Architects





Walmer Castle and Gardens Learning Centre (Dover) / Adam Richards Architects



Winchester Cathedral South Transept Exhibition Spaces / Nick Cox Architects with Metaphor Metaphor



South West

Bath Schools of Art and Design / Grimshaw



Redhill Barn (Devon) / TYPE Studio



The Story of Gardening Museum (Somerset) / Stonewood Design with Mark Thomas Architects and Henry Fagan Engineering





Tintagel Castle Footbridge for English Heritage (Cornwall) / Ney & Partners and William Matthews Associates



Windward House (Gloucestershire) / Alison Brooks Architects





ArchDaily

Projects Products

Maggie's Cardiff / Dow Jones Architects



West Midlands

Jaguar Land Rover Advanced Product Creation Centre (Warwickshire) / Bennetts Associates

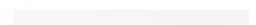
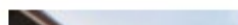


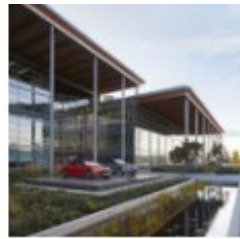
Prof Lord Bhattacharyya Building University of Warwick / Cullinan Studio





Image gallery





ArchDaily

Projects Product



About this author



Andreea Cutieru

Author

FOLLOW

#TAGS

News

Architecture News

RIBA

Scotland

United Kingdom

Wales

RIBA Awards

London