

NEW TEACHING AND LEARNING SPACES

Proposed Sites

Francis Holland School has identified future projects within the school site to provide much needed teaching and learning space for pupils and staff. A Planning Application has been submitted to Westminster City Council and a decision is expected in November.



FRANCIS HOLLAND SCHOOL
SLOANE SQUARE



CENTRE FOR CREATIVE LEARNING

Roof Garden Landscape Plan



FRANCIS HOLLAND SCHOOL
SLOANE SQUARE

The Landscape proposals at the frontage of Grosvenor Building include:

- A tranquil Roof Garden that will provide a calm and reflective space, provide multiple areas for reading, quiet conversation and relaxation.
- Outdoor classroom with a learning environment for small study groups and an open area for relaxation, reading and quiet conversation.
- Mounded lawns with small fruit and flowering trees, colourful and scented perennial shrub planting and herbs.
- Wildlife habitats zone with a bug hotel to provide a haven for small insects and local wildlife.
- Vegetable patch / edible garden where younger girls can seed and harvest their own flowers and vegetables.
- A water feature memorial framed by ornamental planting and seating providing a place to stop and reflect.
- An enclosed reception outdoor play area.
- Lower ground floor sheltered space with seating for play, socialising or just relaxation during breaks between classes.

The key objectives of the design take into consideration all elements that will:

- Result in the development of a high quality landscape which relates to the context of Belgravia's Conservation Area.
- Create an outdoor space that compliments the proposed building for creative learning, promoting education through discovery and interaction.
- Provide flexible spaces that address the school's needs and can accommodate multiple uses.
- Support the important functions of work, education and leisure whilst also appearing inviting and attractive.



CENTRE FOR CREATIVE LEARNING

Roof Garden Landscape Concept



FRANCIS HOLLAND SCHOOL
SLOANE SQUARE

The Vision:

The aim of the garden is to create a complimentary outdoor space to the proposed Centre for Creative Learning.

The main educational objectives are to be achieved by creating spaces that support interactive play, creative activities and also encourage children to explore nature.

The roof garden provides multiple spaces which vary in character and uses, providing a variety of settings for informal outdoor play and learning.

The character of the green buffer zone planting is inspired by the characteristics of a traditional English cottage garden, with borders rich in colourful and scented flowers and herbs. Children are encouraged to explore the plants through senses, and observing wildlife.

The garden also provides opportunities for children to get involved in the maintenance of the planted borders and activities that will inspire them to learn about the plants.

Apart from informal play the different character zones will provide space for everyday sitting, studying, relaxation and socialising.



SENSORY GARDEN

- Contact with nature
- Exploring plants through senses



SENSORY GARDEN



EDUCATIONAL

- Observing nature
- Wildlife habitats
- Plant knowledge
- Outdoor classes



BUG HOTEL



early spring - white & purple



late spring - purple



early summer - purple & red



late summer - red and orange



autumn - pale orange and green



Improving biodiversity
creating habitats



supporting birds



plants for
pollinators



shelter for
invertebrates



EDIBLE GARDEN



OUTDOOR ACTIVITIES

- Getting involved - maintenance and growing
- Exploring plant knowledge
- Creative outdoor play



OUTDOOR CLASSROOM



outdoor studying



outdoor play



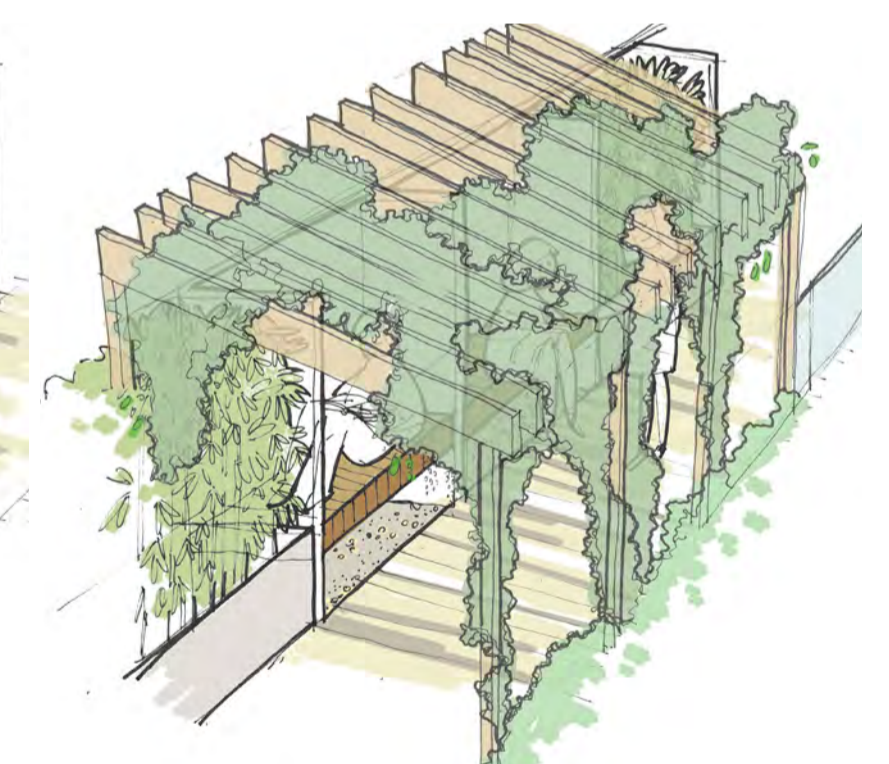
drama classes



outdoor lectures



STUDY ROOM



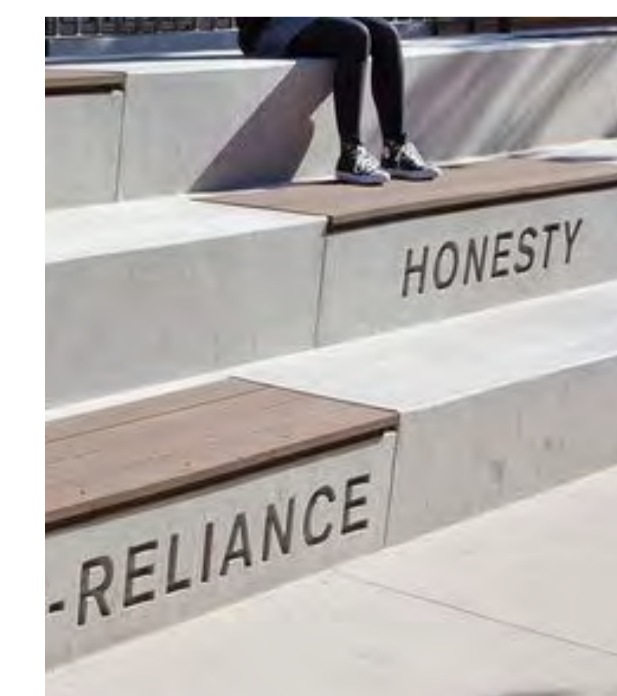
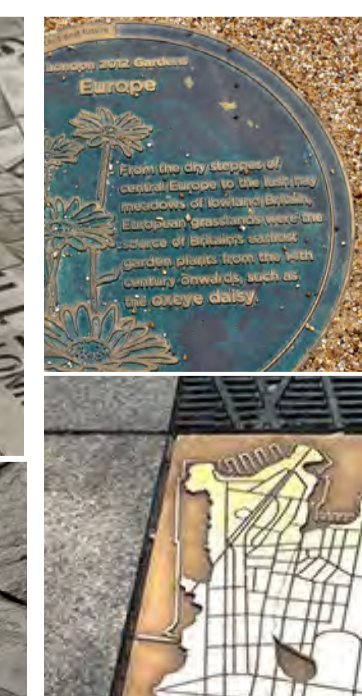
LANDSCAPE ELEMENTS



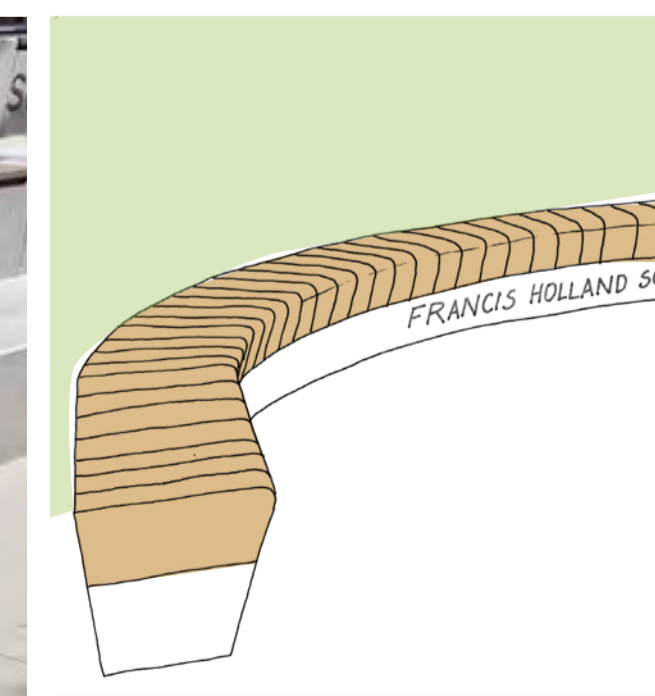
playful paving



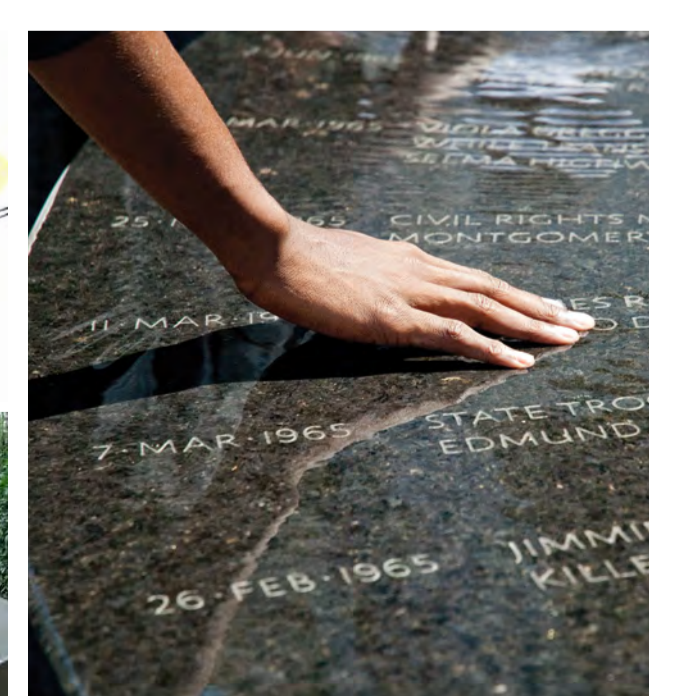
metal inserts within paving



engraved bench



water feature memorial



CENTRE FOR CREATIVE LEARNING

View to the Roof Garden



FRANCIS HOLLAND SCHOOL
SLOANE SQUARE

We are proposing a new Centre for Creative Learning that combines attractive garden spaces at first floor roof level with informal learning in the building below. We have maintained a link between Graham Terrace and the ground floor of the Junior School.

The garden has different characteristics, from spaces that are calm and quiet to a kitchen garden. The roof structure would support soil for small trees.

In addition to this, we propose a three storey Early Years and Studio Extension which would provide a sheltered reception recreation space and additional teaching space for Reception and Year One pupils.



First Floor Plan



CENTRE FOR CREATIVE LEARNING

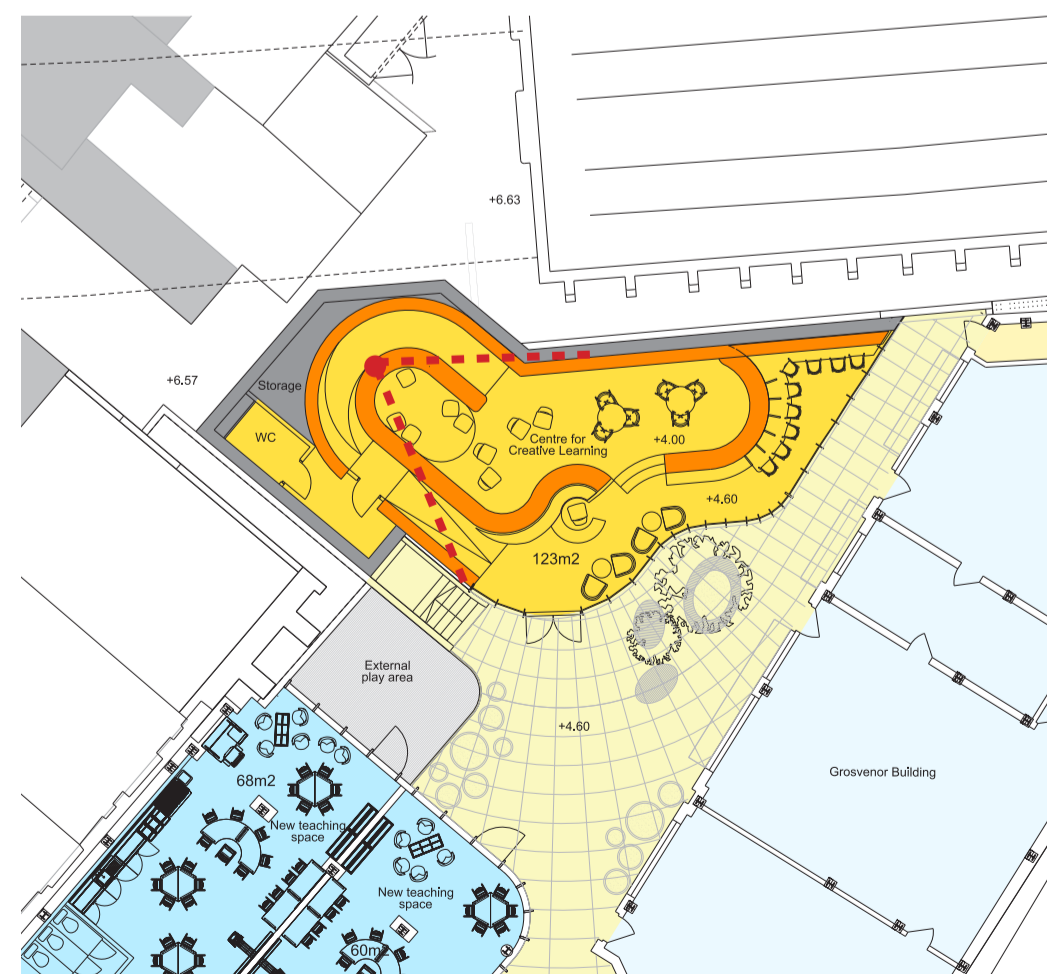
Internal View



FRANCIS HOLLAND SCHOOL
SLOANE SQUARE

The book-lined Centre for Creative Learning offers many opportunities for independent study and group work. Level changes suggest areas for authors, illustrators, artists and inventors to interact with students through presentations and events.

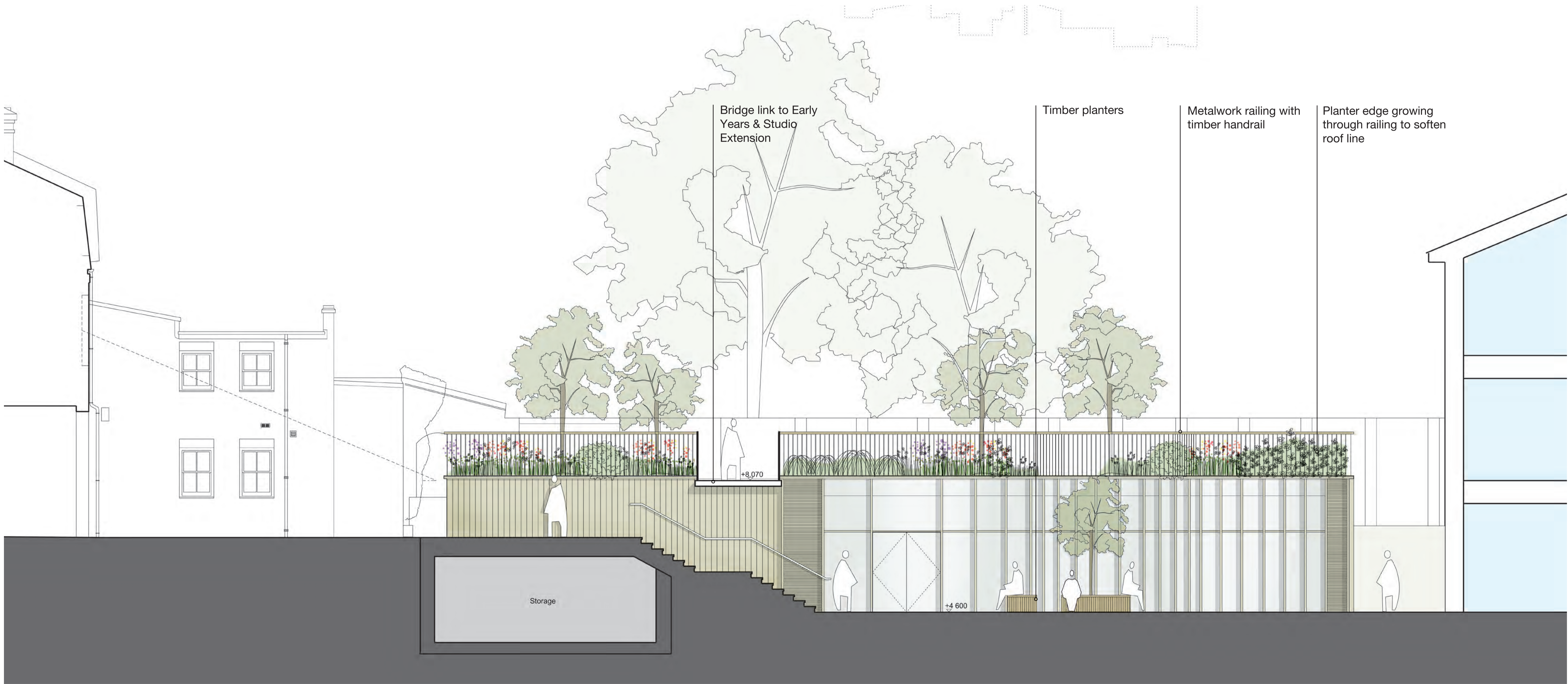
The library space will provide a distinctive and comfortable area for younger pupils to sit and read whilst older pupils can enjoy quiet study with laptop benching integrated into the curving bookshelves.



Ground Floor Plan

CENTRE FOR CREATIVE LEARNING

Proposed Elevation



CENTRE FOR CREATIVE LEARNING

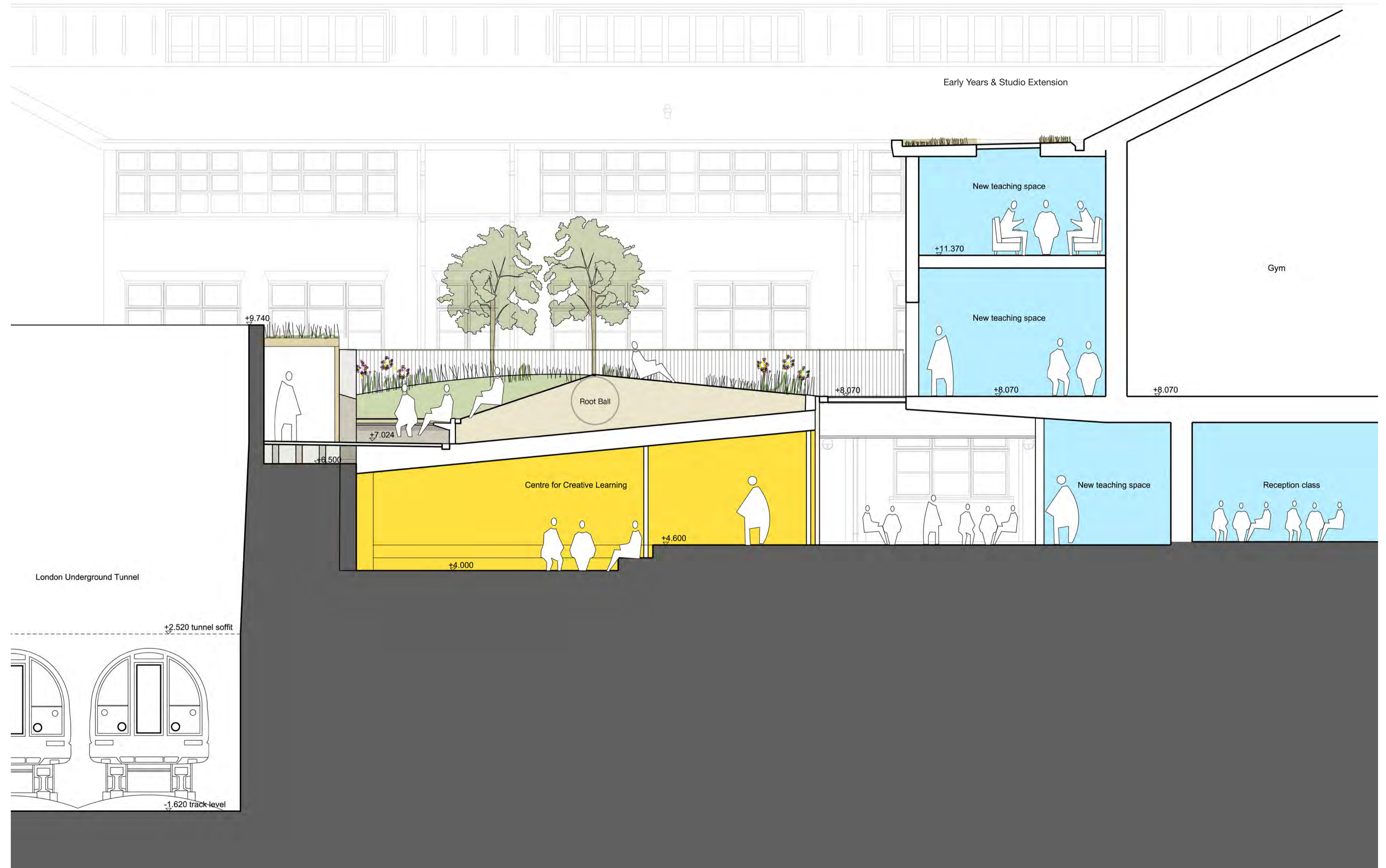
Proposed Section through Library, Garden & Early Years & Studio Extension



FRANCIS HOLLAND SCHOOL
SLOANE SQUARE

It is proposed that the building will occupy the space up to the existing lower brick wall at the back of the site and across to where the current seating steps are.

New hard landscaping, areas of planting and informal seating are proposed as part of the scheme.



First Floor Plan

EARLY YEARS & STUDIO EXTENSION

Three Storey Extension



FRANCIS HOLLAND SCHOOL
SLOANE SQUARE

It is proposed that part of the ground floor will be refurbished and extended to provide a dedicated Early Years facility with an additional two storey extension above comprising of a performing arts space and ICT lab for all pupils.

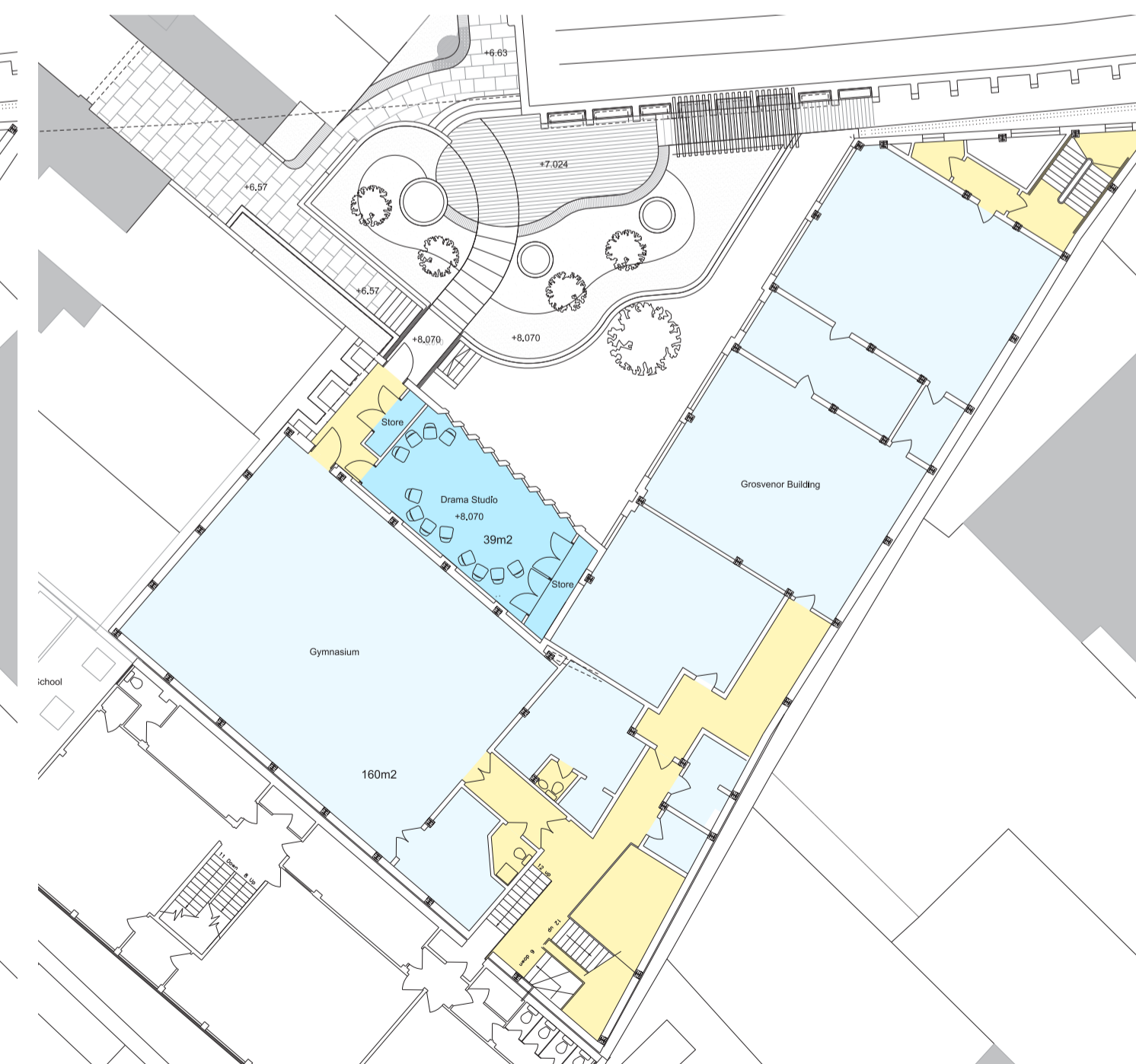
Proposals include:

- New Reception Year Class
- New Year One Class
- Wellness Suite
- New outdoor play area for Reception Year
- Office space
- Drama studio (extension to the gym)
- ICT lab

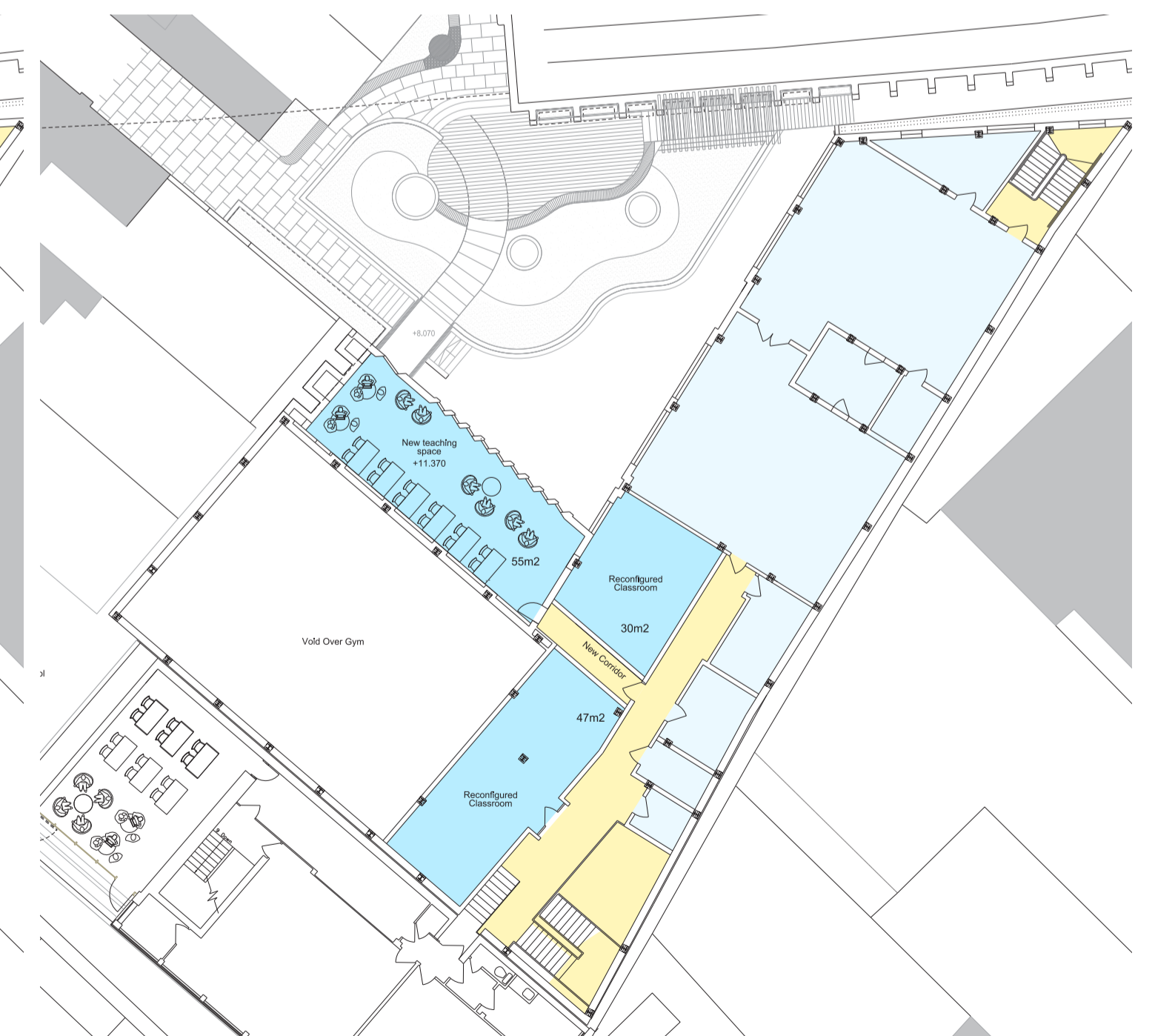
The Studio Extension on the first and second floor will provide much needed space to enhance the drama and dance provision with a direct bridge link leading out onto the new roof garden. The extension will follow the line of the existing garden wall with its shape and windows angled to minimise overlooking neighbouring houses. There will be a green roof to the extension.



Ground Floor Plan



First Floor Plan

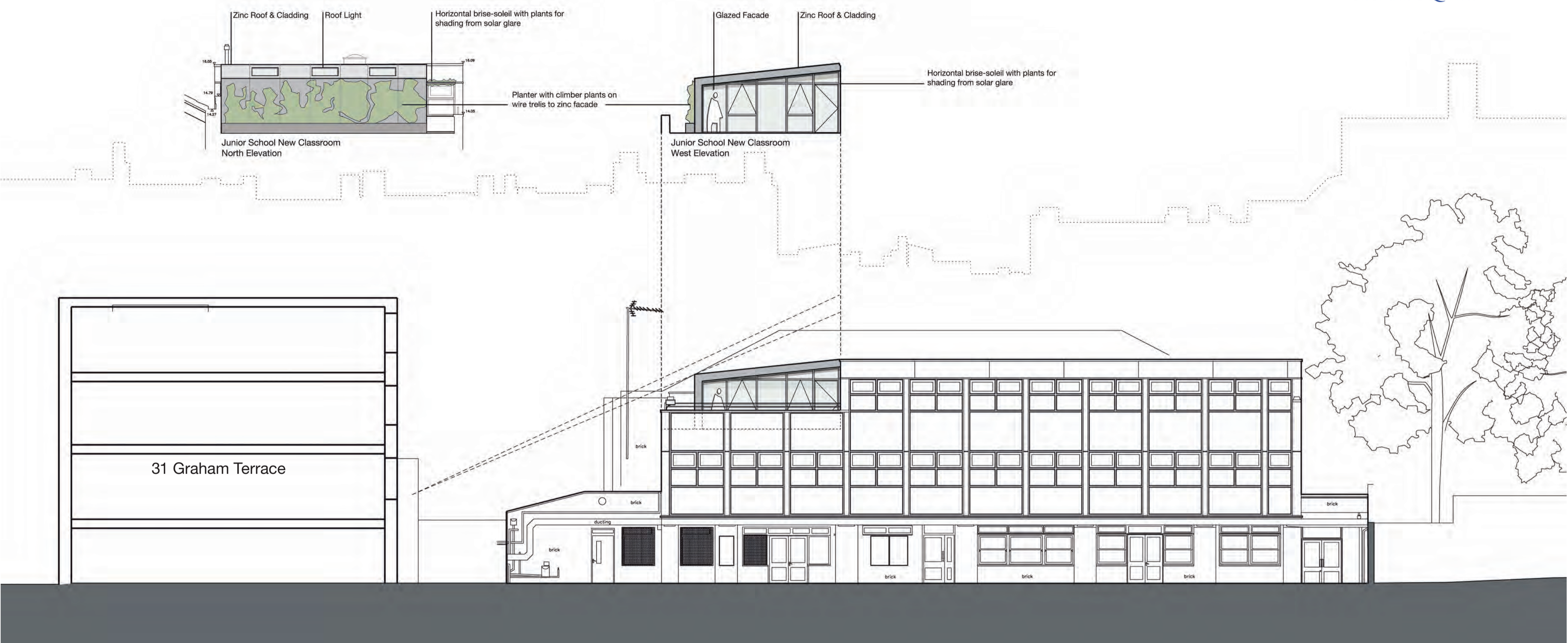


Second Floor Plan

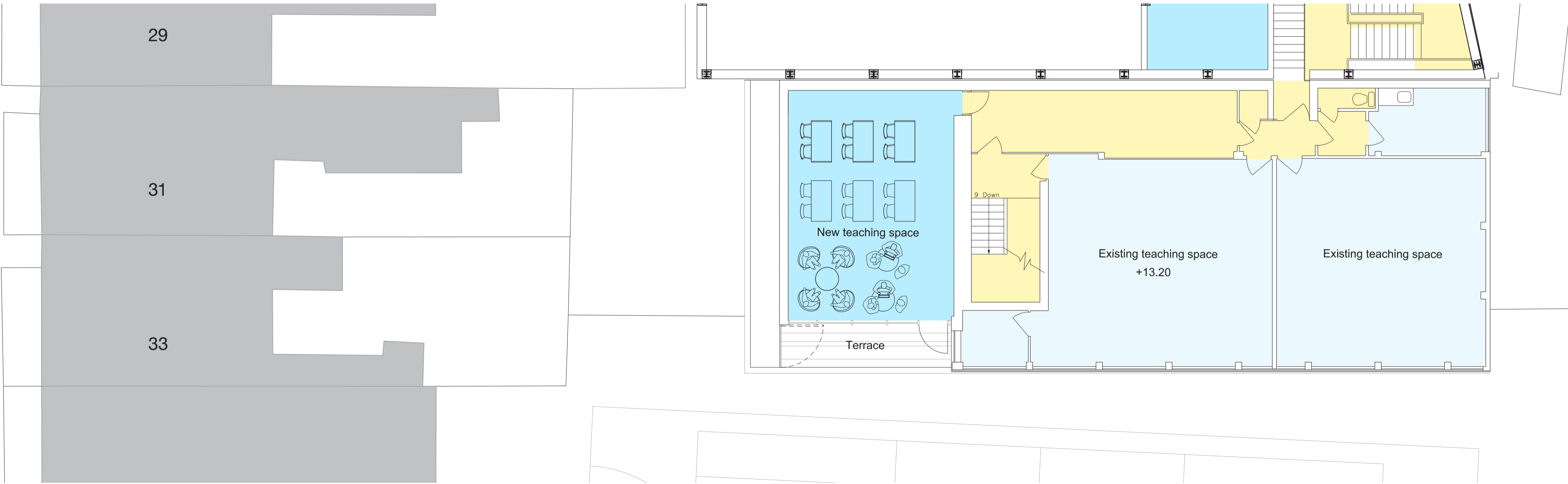
JUNIOR SCHOOL

Proposed Second Floor Roof Extension

It is proposed to provide a new room on the roof of the existing Junior School Building for additional office and/or teaching space, extending the second floor. The mass of the extension would step back from the west facade so as to reduce the impact on the properties on Graham Terrace.



Elevation from Playground



Second Floor Plan

CENTRE FOR CREATIVE ENTERPRISE

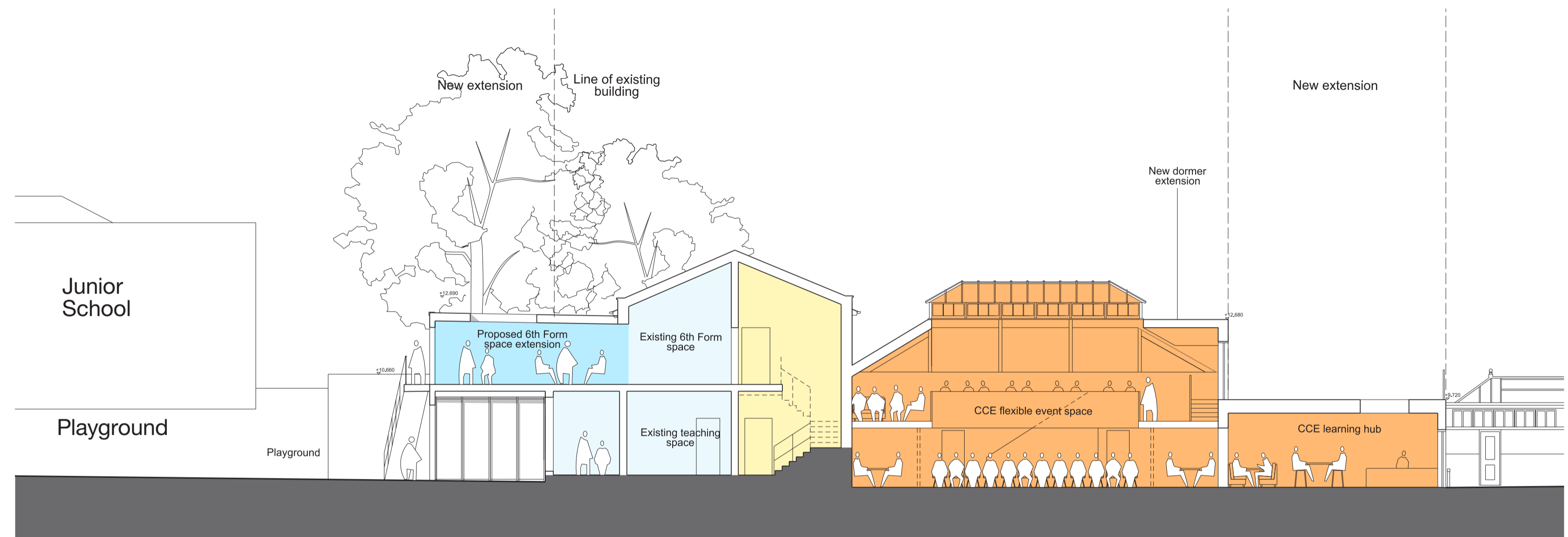
Proposed Extensions & Refurbishment to the Morison Building



FRANCIS HOLLAND SCHOOL
SLOANE SQUARE

The Morison Building will be extended to the north and south and will be reconfigured internally for the new Centre for Creative Enterprise. The one storey extension to Ebury Street will provide a front facing entrance and meeting place, inviting parents and members of the local community to share ideas with students, build start-ups and develop digital technology skills.

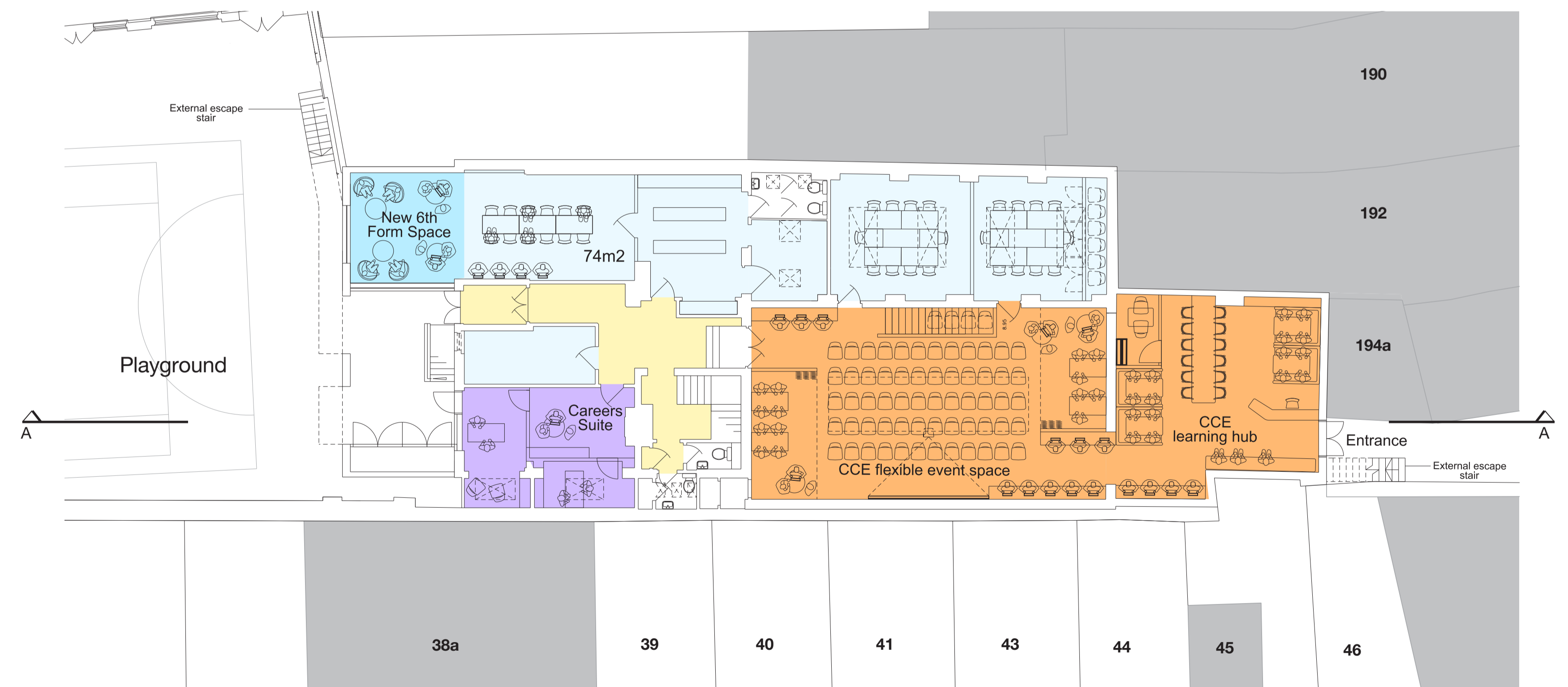
Facilities will include social and collaborative space for business and entrepreneurial ideas, an event space for workshops and presentations and areas for small group study as well as a careers suite. The mezzanine will be expanded to provide more independent study space.



Long Section AA



Learning Hub from the Ebury Street entrance



Ground Floor Plan

CENTRE FOR CREATIVE ENTERPRISE

Proposed Extensions & Refurbishment to the Morison Building



FRANCIS HOLLAND SCHOOL
SLOANE SQUARE

It is proposed to extend the part of the building that faces the playground on the ground and first floor levels providing more spacious and fit for purpose facilities for the Sixth Form students.



Elevation from the Playground



Flexible event space



First Floor Plan